



CLEANING AND DEEPENING OF FISH RIVER

PRESENTERS NAME: Domingo Matesu

CATEGORY: Climate Change and Sustainable Development

INSTITUTION: Mariental Municipality

NAMIBIA: SADC GENDER PROTOCOL SUMMIT

3-4 April 2013

Windhoek

GENDER EQUALITY BY 2015, YES WE MUST!

BRIEF DESCRIPTION OF THE GOOD PRACTICE

- **Hardap Dam on the Fish River 22 km north east of Mariental is the biggest dam in Namibia with water surface of about 25 sq kms, a capacity of 320 million m³ and an 86.2 metre long dam hall.**
- **The dam provided water for irrigation, making possible to cultivate animal fodder, as well as corn, fruits and vegetables. Export grapes, cotton, Lucerne and dairy products are also sustained by irrigation from Hardap Dam.**
- **In February 2006 flood swept through Mariental causing wide spread damage in the towns residential and business areas.**



BRIEF DESCRIPTION OF THE GOOD PRACTICE

- The Mariental Flood Task Force (MFTF) was appointed by His Excellency the President to advise Government about flood mitigation measures at Mariental.
- They recommended the option showing the best technical and financial features: To clear the reeds and deepening of the channel of the Fish River between the Hardap Dam and the Maltahöhe Road Bridge. This would also require channel maintenance measures.



WHAT IS THE PROBLEM BEING ADDRESSED? WHY?

- **The reeds blocking the flow of river caused it to burst its banks and sweep into town.**
- **In 2006 the river could only maintain releases from the Dam of 400 cubic metres per second, but during 2011/12 seasons it carry releases of up to 800 cubic metres per second, because the reeds were sprayed as one of the mitigating factors.**
- **The exercise will ensure river to flow smoothly in river bed without anything blocking it and safe Mariental from further floods.**



HOW IS THE PROJECT CONTRIBUTE TOWARDS ACHIEVING THE 28 TARGETS OF THE SADC PROTOCOL?

PROTOCOL TARGET	ACTIONS
GOVERNANCE	<p>Stakeholders cooperate in facilitating the development of human, technical and financial capacity for the implementation of sustainable developmental activities promoting women and men as equal in all.</p> <p>The inclusion of women is aimed at providing for the empowerment of women and eliminate discrimination and to achieve gender equality. Public awareness campaigns were conducted and women and men were equally represented in the decision making processes</p>

DESCRIBE YOUR TARGET GROUP

- **The narrow areas in the fish river and the growing Prosopis and Tamarisk Plants were target. The idea is to save Mariental from floods and to stop losses due to flood.**
- **It was recommended to employ unemployed local members, so the residents of Mariental will benefit from the project.(both men and women.**
- **The clearing and deepening of the river was also aimed at insurance companies to provide flood cover to residential and businesses.**



OBJECTIVES

- The area will be divided up into five sections and the main focus will be the removal of sediments and reeds from the river to increase the flow capacity of the river.
- The river will be cleared to be 150 metres wide and approximately two metres deep. Millions of tonnes of sediment and sand will be removed from the river, as well as Prosopis Trees and Tamarisk plants which also are a huge problem, adding to the narrowing of the river.



PROCESS

- To establish the extent of the damage caused by the February 2006 floods below the Hardap dam.
- To investigate and report the factors contributing to the flood.
- To make recommendations for measures that can be taken to prevent or at least significantly reduce the risk of similar flooding in the future.
- Tender documents were draw and advertised in various local news papers.
- To prepare the best social, economic, technical and financial advice to enable the Government to take decisions about the short and long term management of flood events in the Fish River.



PROCESS

- It has become clear that to remove the reeds, a method is required that first drains the river in sections and then uses conventional earth moving equipment to remove the growing reeds. The proposed method is thus to clear the river in sections
- This results in excavations of people and excessive damage to properties and infrastructure.
- The task force should meet with the insurance industry and discuss the proposed mitigation option for possible flood insurance.



WHAT HAVE BEEN THE MAIN SUCCESSES?

- Due to flood the council has embark an project and is trying to move new developments and town expansion to the eastern part of town that are not in danger of any floods. Propose new town transformation plan.
- In cooperation with Swedish partners and Stubenrauch Consultant we are busy with an structure plan for Mariental.



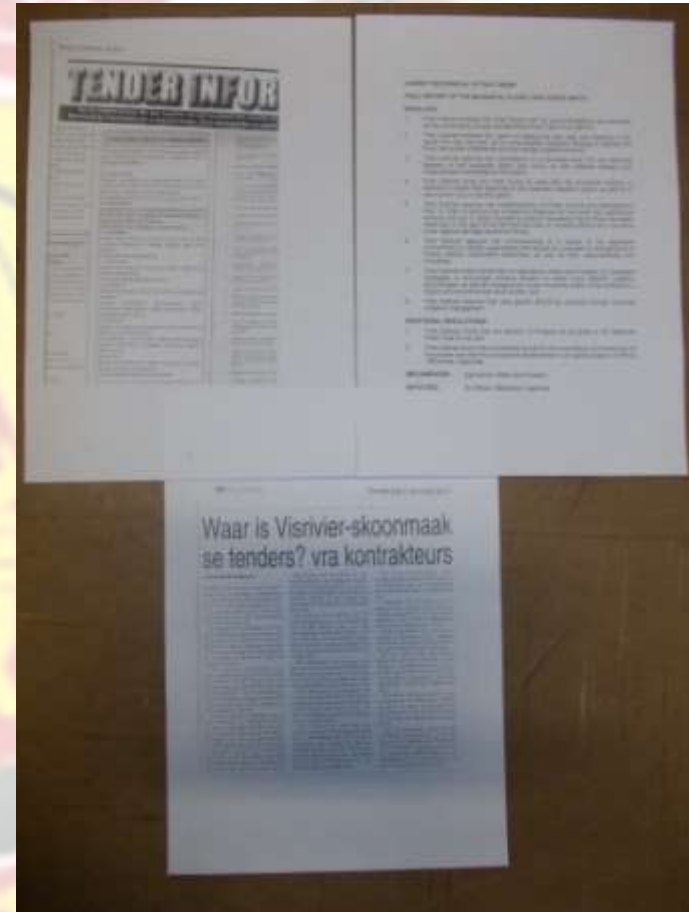
WHAT HAVE BEEN THE MAIN SUCCESSES?

- The spraying of the reeds has contributed to the lifting of the moratorium on construction of new buildings in the flood prone area.
- After the lifting, renovations and construction of new buildings has started, bringing employment opportunities and town development back in our town.
- Business community is having trust in council and still investing, and create lot of job opportunities for residents of town.



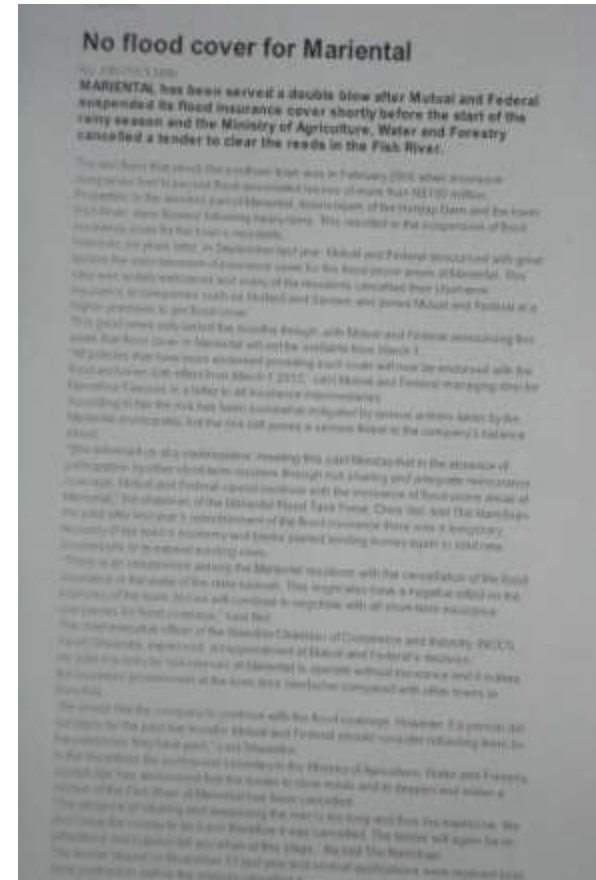
KEY OUTPUTS (MATERIALS ETC.)

- **The Consultants and Task Force compile a report and submit to cabinet and was endorse by cabinet.**
- **The tender document was made available to all the possible companies to tender.**
- **The tender was allocated to a construction company and timeframe was set up with commencement and due date of the project.**



KEY OUTCOMES (MAIN RESULTS)

- The affected community see there has been progress made after the set up of the tasks force was regionalize, some residents not convince as can be seen in newspaper adverted.
- Although project has started the insurance industries are reluctant and still waiting for more positive results before considering flood cover.
- Meetings will be conducted by the Planning Consultants to discuss and hear their inputs and suggestions with regard to town transformation and expansion of town boundaries.



CHANGING LIVES

- **Chris Nell is the chairman of the task force and he said after functions of the taskforce was taken over by local people things has really change and progress made.**



LESSONS LEARNT

- **Emergency Management Plan is needed and update as required.**
- **The Mariental Municipality Emergency management plan was not clear on flood situations and chain of command during such incidence.**
- **Stakeholders should meet regularly and update the structures as changes occur.**
- **Public health institutions should be involved for better safety precautions and steps.**



WAY FORWARD

- **The Government are currently planning to build a second and bigger dam downstream in the Fish River(the Neckerdal Dam).**
- **All this precautionary measures can be replicated to avoid similar floods.**
- **Draw up emergency management plan and implement it from the start than everyone will know what their responsibilities are .**
- **Negotiations with insurance companies will continue until amicable solution is on table.**
- **Establishment of Chamber and Commerce branch for regular consultations.**